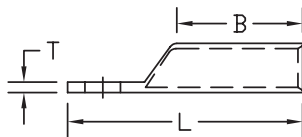
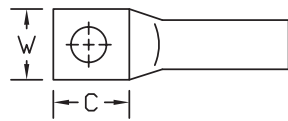


## Long Barrel - One Hole Tongue with Closed Transition

### Type BBLU-S









- Manufactured from high conductivity seamless copper tubing
- Tin-plated to inhibit corrosion
- Beveled entry for easy cable insertion
- Closed transition protects end of cable from environmental conditions
- Long barrel provides high pull out force and added secureness for improved mechanical and electrical properties
- Color coded barrels are marked with die index numbers
- Connectors are suitable for voltages up to 35 KV
- 45° and 90° angles are UL listed and CSA certified
- **Connectors are UL listed and CSA certified with Penn-Union, Burndy, T&B, Huskie, Greenlee and Versa-Crimp® style tooling**



#### BBLU-S

See table for dimensions and installation tooling information

## BBLU-S DIMENSIONS & INSTALLATION TOOLING INFORMATION

CATALOG NUMBER	COPPER CONDUCTOR SIZE	STUD HOLE SIZE	FIGURE DIMENSIONS (IN.)					INSTALLATION TOOLING				WIRE STRIP LENGTH
			TONGUE WIDTH "W"	TONGUE LENGTH "C"	TONGUE THICKNESS "T"	BARREL LENGTH "B"	OVERALL LENGTH "L"	COLOR CODE	PENN-UNION DIELESS MECHANICAL TOOLS	BURNDY DIE INDEX NO. /TOOL	PENN-UNION DIE CATALOG NO.	
BBLU-85 ■	8 AWG	#10	.41	.69	.08	1.06	2.00	Red	TDM-250 or TDM-500	6	T-49	1-3/16"
BBLU-852 ■		1/4"	.41	.69	.08	1.06	2.00					
BBLU-65	6 AWG	1/4"	.41	.69	.09	1.09	2.03	Blue	TDM-250 or TDM-500	7	T-7	1-1/4"
BBLU-651		1/2"	.70	1.07	.09	1.00	2.20					
BBLU-45	4 AWG	1/4"	.48	.69	.09	1.09	2.06	Gray	TDM-250 or TDM-500	8	T-8	1-1/4"
BBLU-451		3/8"	.82	1.23	.10	1.13	2.65					
BBLU-452		1/2"	.70	1.07	.09	1.00	2.20					
BBLU-353	3 AWG	1/4"	.53	.75	.10	1.12	2.15	White	TDM-250 or TDM-500	9	T-9	1-1/4"
BBLU-351		5/16"	.53	.75	.09	1.13	2.16					
BBLU-35		1/2"	.93	1.12	.10	1.13	2.53					
BBLU-259	2 AWG	#10	.59	.75	.11	1.22	2.25	Brown	TDM-250 or TDM-500	10	T-10	1-3/8"
BBLU-252		1/4"	.59	.75	.11	1.22	2.25					
BBLU-25		5/16"	.59	.75	.11	1.22	2.25					
BBLU-254		3/8"	.59	.75	.11	1.22	2.25					
BBLU-253		1/2"	.75	1.07	.09	1.10	2.33					
BBLU-153	1 AWG	#10	.67	.75	.11	1.34	2.38	Green	TDM-250 or TDM-500	11	T-11	1-1/2"
BBLU-157		1/4"	.67	.75	.11	1.34	2.38					
BBLU-15		5/16"	.67	.75	.11	1.34	2.36					
BBLU-152		3/8"	.67	.75	.11	1.34	2.38					
BBLU-158		1/2"	.75	1.25	.09	1.38	2.86					
BBLU-1/05	1/0 AWG	5/16"	.73	.75	.13	1.34	2.44	Pink	TDM-250 or TDM-500	12	T-12	1-1/2"
BBLU-1/052		3/8"	.75	.81	.12	1.25	2.37					
BBLU-1/0515		1/2"	.75	1.38	.13	1.38	3.06					
BBLU-2/05	2/0 AWG	3/8"	.81	.87	.13	1.50	2.72	Black	TDM-250 or TDM-500	13	T-13	1-5/8"
BBLU-2/051		1/2"	.81	1.25	.13	1.50	3.06					
BBLU-3/052	3/0 AWG	3/8"	.89	1.25	.12	1.50	3.12	Orange	TDM-250 or TDM-500	14	T-14	1-5/8"
BBLU-3/05		1/2"	.89	1.25	.13	1.50	3.12					
BBLU-4/05	4/0 AWG	1/2"	1.00	1.25	.14	1.63	3.31	Purple	TDM-250 or TDM-500	15	T-15	1-3/4"
BBLU-0255	250 kcmil	1/2"	1.09	1.25	.16	1.63	3.38	Yellow	TDM-250 or TDM-500	16	T-16	1-3/4"
BBLU-0305	300 kcmil	1/2"	1.19	1.25	.16	2.00	3.81	White	TDM-500	17	T-17	2-1/8"
BBLU-0355	350 kcmil	1/2"	1.28	1.25	.17	2.00	3.84	Red	TDM-500	18	T-18	2-1/8"
BBLU-0405	400 kcmil	5/8"	1.39	1.50	.19	2.13	4.31	Blue	TDM-500	19	T-19	2-1/4"
BBLU-04051		1/2"	1.39	1.25	.18	2.12	4.06					
BBLU-0505	500 kcmil	5/8"	1.53	1.47	.21	2.31	4.56	Brown		20	T-20	2-3/8"
BBLU-05052		1/2"	1.53	1.25	.21	2.25	4.25					
BBLU-06052	600 kcmil	1/2"	1.72	1.50	.27	2.69	5.09	Green		22	T-22	2-13/16"
BBLU-0605		5/8"	1.72	1.75	.27	2.69	5.34					
BBLU-0655	650 kcmil	1/2"	1.78	1.75	.26	2.81	5.40	Pink		300	T-300	2-15/16"
BBLU-06551		5/8"	1.78	1.75	.27	2.81	5.41					
BBLU-0755	750 kcmil	5/8"	1.91	1.75	.27	2.88	5.56	Black		24	T-24	3"
BBLU-0805	800 kcmil	5/8"	1.96	1.50	.25	2.93	5.46	Orange		25	T-25P	1-3/4"
BBLU-1005	1000 kcmil	5/8"	2.17	1.75	.33	3.00	5.88	White		27	T-27P	3-1/8"
BBLU-1505	1500 kcmil	3/4"	2.69	2.13	.39	3.19	6.53	Green		31	T-31P	3-5/16"
BBLU-2005	2000 kcmil	3/4"	3.07	2.12	.46	3.43	6.87	Brown		34	-	3-9/16"

■ CSAus certified

• For 45° or 90° BENT TONGUES add suffix "-45" for 45 deg. or "-90" for 90 deg. to the catalog number

- Connectors from 8 AWG - 2000 kcmil are UL listed per UL486A-B and CSA certified per C22.2 No.65 for POWER applications
- Connectors from 8 AWG - 500 kcmil are UL listed for grounding, bonding and direct burial applications per UL467
- Connectors from 8 AWG - 250 kcmil are CSA certified for grounding, bonding and direct burial applications per C22.2 No.41